



Lam-e



St-Pierre

**KITO**

## M3CB MANUAL CHAIN HOISTS



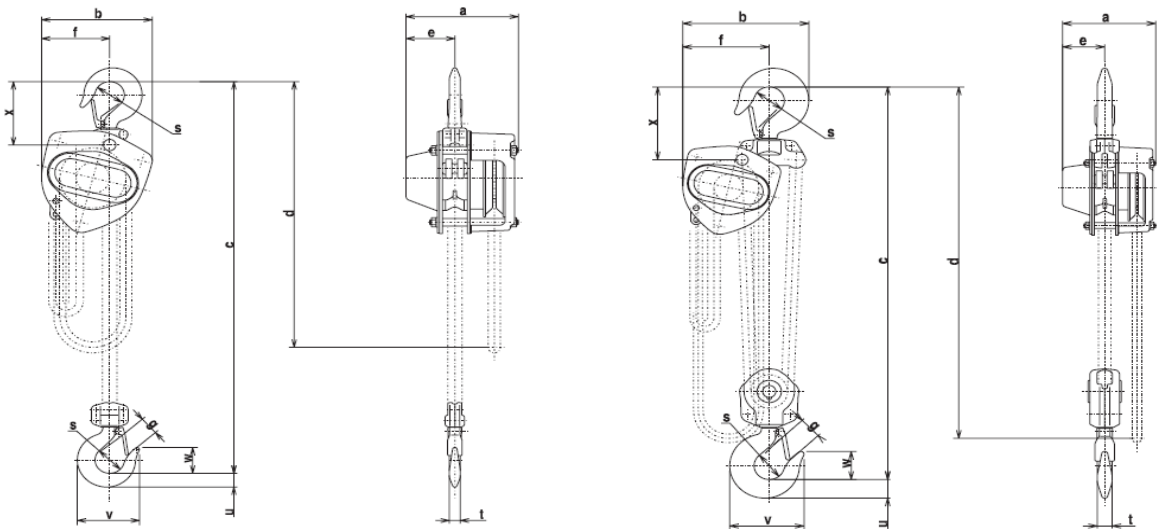
### FEATURES

- At rated capacity, load-bearing parts are only stressed to 25% of their limit
- Abrasion resistant load chain is made from heat-treated alloy steel for high, uniform strength
- Forged carbon steel hook design will not fracture under excessive load
- Safe, reliable mechanical brake activates instantly, holds the load securely
- Compact design for lightweight portability
- Articulating top hook allows you to properly centre the load
- Sealed gears and brake protected against damage from dust and water
- Open load sheave allows easy inspection and cleaning without dismantling the unit
- ASME B30.16 Safety Standard - ASME HST-2 Performance Standard - Grade 100 Chain
- Options : Chain bag to keep chain clean and out of the way, slip clutch protects hoist from overloading

CAPACITY (T.M.)	MODEL	DIMENSIONS (MM.)												
		C	A	B	D	E	F	G	S	T	U	V	W	X
1/2	M3CB005	285	158	161	2.5	69	99	27	35.5	12.1	17.0	77	35.0	89
1	M3CB010	295	162	161	2.5	71	99	29	42.5	16.0	21.8	93	41.0	101
1 1/2	M3CB015	350	171	182	2.5	78	112	34	47.5	19.5	26.5	106	47.0	119
2	M3CB020	375	182	202	3.0	87	125	36	50.0	21.8	30.0	116	49.0	124
2 1/2	M3CB025	420	192	233	3.0	91	143	40	53.0	24.3	33.5	126	53.0	136
3	M3CB030	510	171	235	3.1	78	162	42.5	56.0	27.2	37.5	138	57.0	148
5	M3CB050	600	192	282	3.6	91	194	46.5	63.0	34.5	47.5	161	67.5	172

½ to 2 ½ Metric Tonne

3 to 5 Metric Tonne



Lam-e



St-Pierre



Montréal | T 514 354-4219 / 1 800 361-4019  
 Québec | T 418 652-9759 / 1 800 652-9759  
 Chicoutimi | T 418 696-9759 / 1 866 696-9759

www.lamestierre.com